

Handout for the International Sustainability Leadership Symposium

September 27th, 2007

Towards a Life-long Active Society

Atsushi SEIKE, PhD, Professor of Labor Economics, Keio University

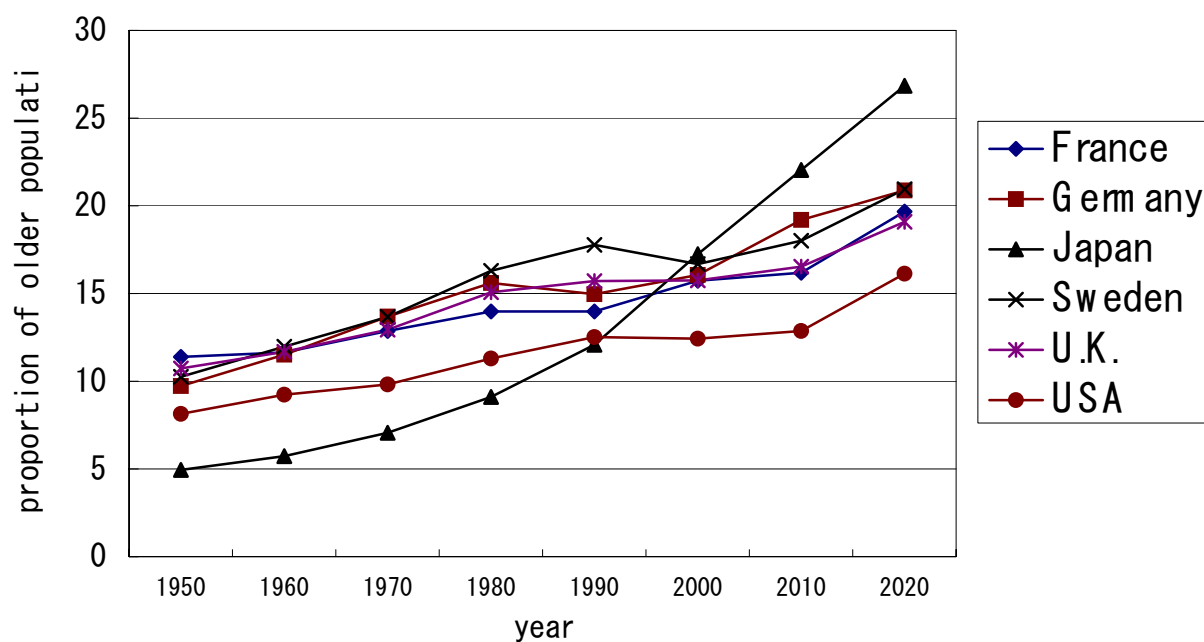
[I] An aging population in Japan

[II] Necessary reforms for a Life-long Active Society

[III] Increase in investment under ageing population

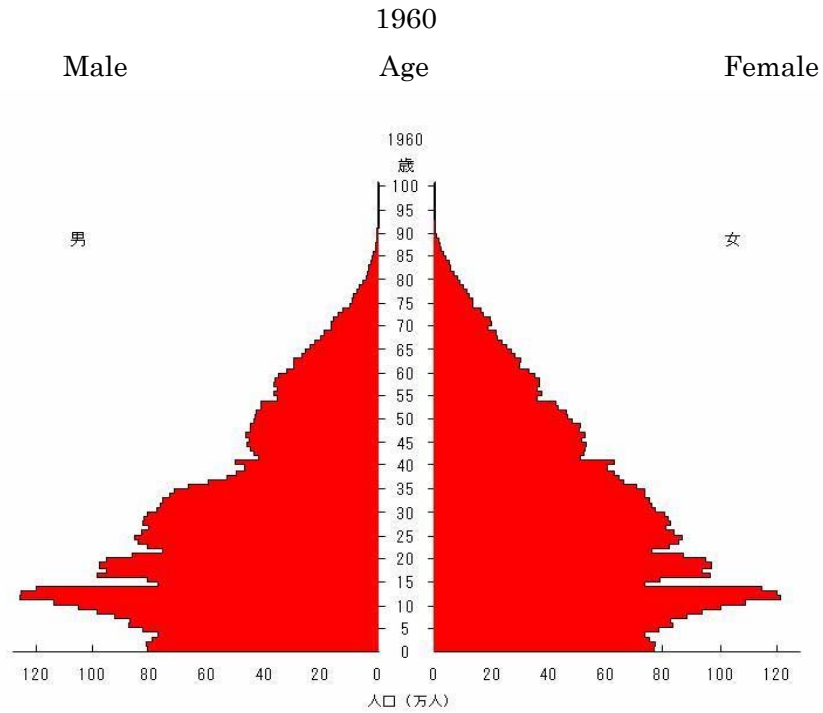
[IV] The baby boomers as an asset

Figure 1 Proportion of the older population in major OECD countries

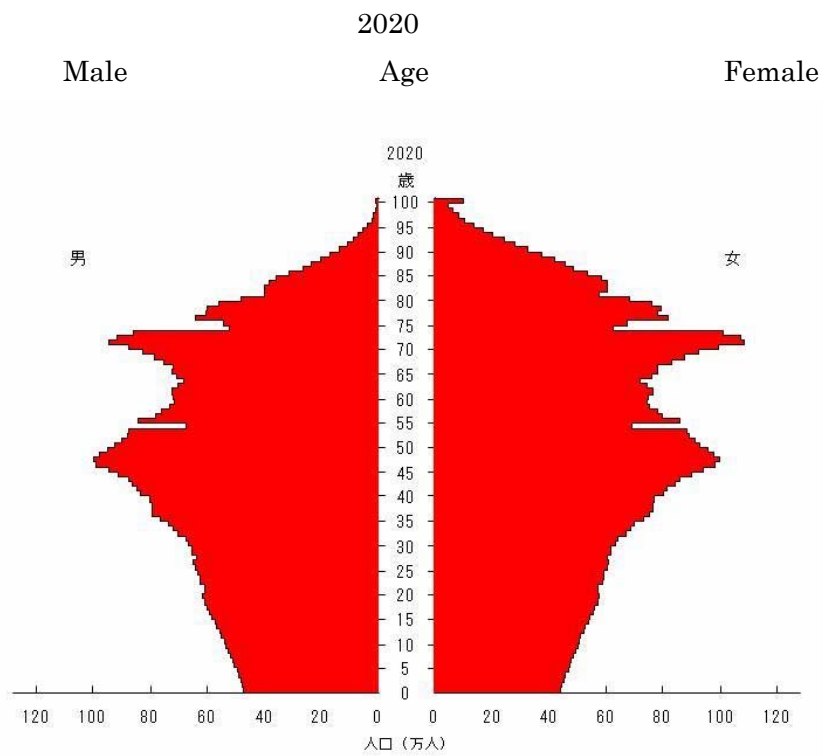


Source: National Institute of Population and Social Security Research (1998) *Latest Demographic Statistics*, Tokyo: National Institute of Population and Social Security Research.

Figure 2 The Changing Population pyramid



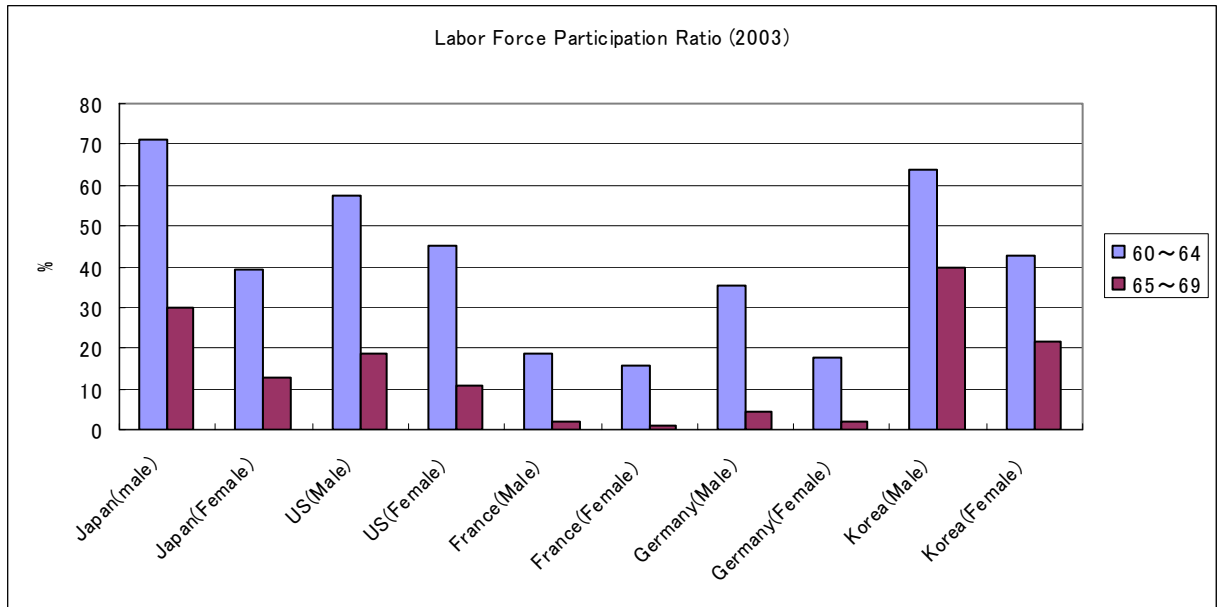
作成：国立社会保障・人口問題研究所



作成：国立社会保障・人口問題研究所

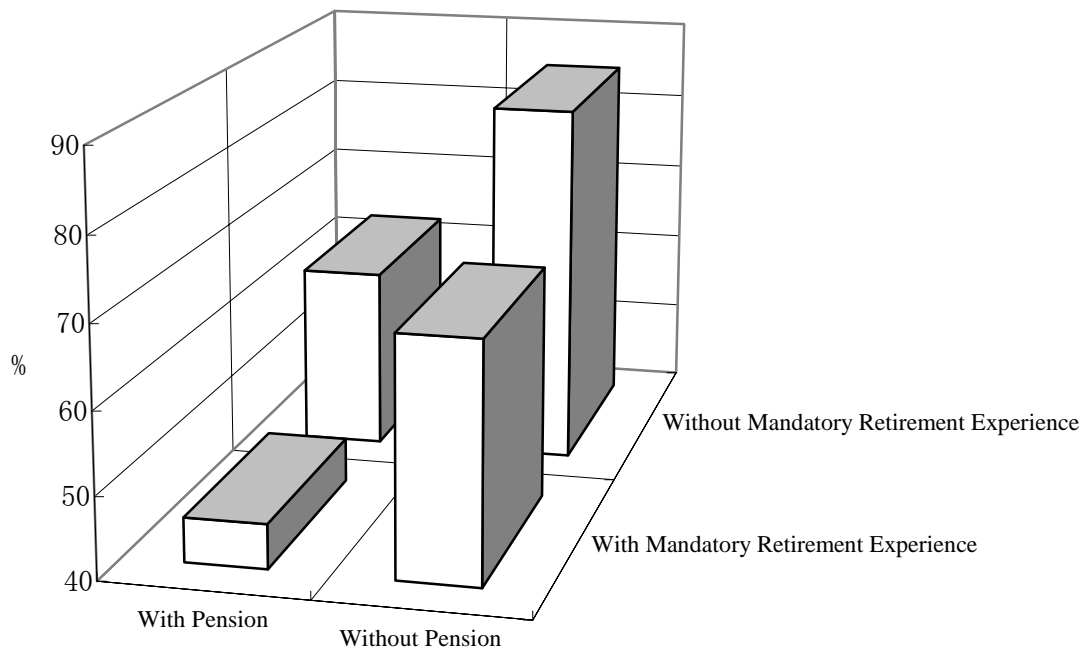
Source: National Institute of Population and Social Security Research

Figure 3 The labor force participation rate of the Elderly in major OECD countries



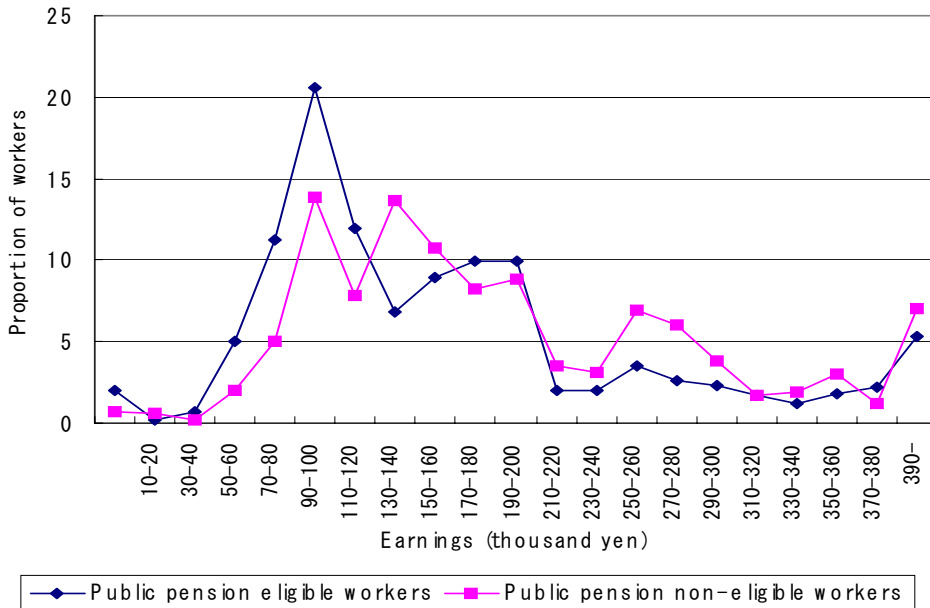
Source: ILO (2005) *Yearbook of Labor Statistics*, Geneva: ILO.

Figure 4 Proportion of workers with the same occupation as they were at age 55



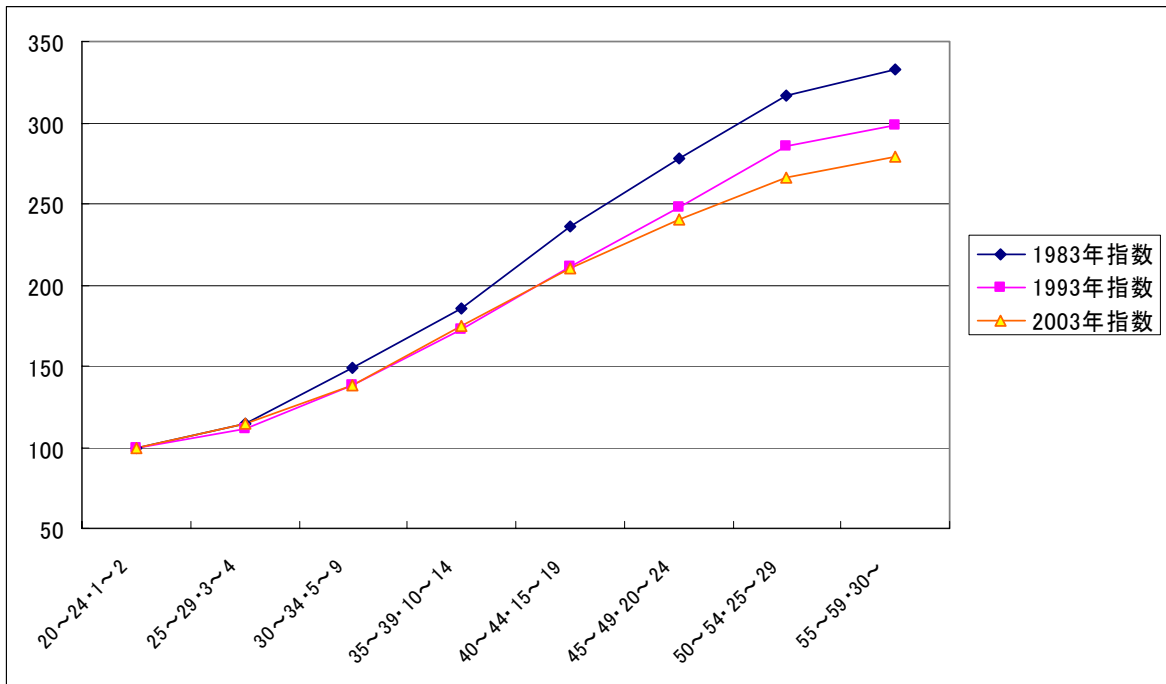
Source: Seike, Atsushi and Yamada, Atsuhiko (2004) *Koreisya Shugyo no Keizaigaku (The Economics of Older Workers)*, Nihon Keizai Shinbunsha.

Figure 5 Earnings distribution for pension eligible workers and others



Source: Seike, Atsushi (1989) *The Effect of the Employee Pension on the Labor Supply of the Japanese Elderly*, A Rand Note, No. 2862, Santa Monica: RAND Corporation.

Figure 6 Seniority-based wages for standard workers (Male with college degree)



Source: Ministry of Health, Labor and Welfare